

TP-Link Technologies Co., Ltd.

TP-Link Deutschland GmbH

TP-Link UK Limited

TP-Link Italia S.r.l.

TP-Link France SARL

TPLink Bilgi Teknolojileri Tic. Ltd. Şti.

TP-Link IBERIA,S.L.

TP-Link Netherlands B.V.

TP-Link (Nordic) AB

TP-Link Hellas Ltd.

NWS.TP-Link Portugal, Unipessoal, Lda.

South Building(floors 1,3,4,5) and 28(floors 1-4), Central Science & Technology Park, Shennan Rd, Nanshan, Shenzhen, China

Robert-Bosch-Straße 9, 65719 Hofheim am Taunus, Germany
Unit 2 & 3 Riverview (142-144), Cardiff Road, Reading, RG1 8EW

Via Gobetti 2/A 20063 Cernusco sul Naviglio (MI)

Bâtiment Equateur, 16-18 avenue Morane Saulnier,
78140 Vélizy-Villacoublay, France

Şerifali Mevkii, Barbaros Cad. Söyleşi Sokak. No:15/2 Kat:3/4
34775 Ümraniye/Istanbul

Calle Quintanavides 17, 3ºE, 28050 Madrid, Spain


Archimedesbaan 18, 3439 ME Nieuwegein
Forumvägen 14, Plan 13, 131 53 Nacka, Sweden

Marathonodromou 77, Marousi 151 24, Greece

Avenida da Liberdade, n°245, 7ºE, 1250-143 Lisboa, Portugal



TP-Link Technologies Co., Ltd.

Specifications are subject to change without notice.  is a registered trademark of TP-Link Technologies Co., Ltd. Other brands and product names are trademarks or registered trademarks of their respective holders.

No part of the specifications may be reproduced in any form or by any means or used to make any derivative such as translation, transformation, or adaptation without permission from TP-Link Technologies Co., Ltd. Copyright © 2020 TP-Link Technologies Co., Ltd. All rights reserved.

 For technical support, replacement services, the user guide and other information, please visit <https://www.tp-link.com/support>, or simply scan the QR code.

7106508605 REV1.3.0

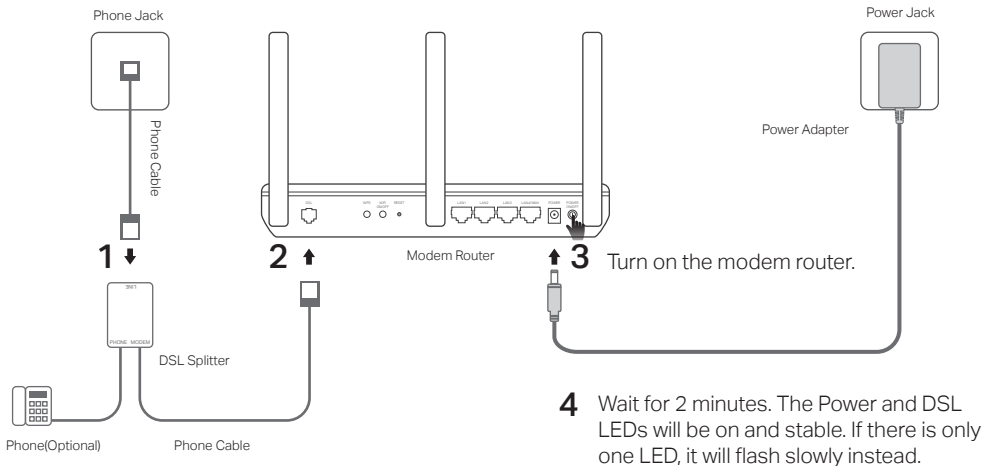


Quick Installation Guide

Wireless DSL Modem Router

Connect the Hardware

If you don't need the phone service, just directly connect the modem router to the phone jack with the provided phone cable, then follow steps 3 and 4 to complete the hardware connection.



* Image may differ from actual product.

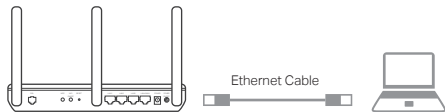
Note: If the LED status is different, please refer to [FAQ > Q2](#).

Configure via Web Browser

1 Connecting your computer to the modem router via a wired or wireless connection

Wired

Connect your computer to the LAN (or 1/2/3/4) port using an Ethernet cable.



Wireless

Connect wirelessly by using the **SSID** (network name) and **Wireless Password** printed on the product label at the bottom of the modem router.

2 Configuring the modem router via a web browser

A Launch a web browser and type in

<http://tplinkmodem.net> or **192.168.1.1**.

Note: If the login page does not appear, please refer to **FAQ > Q1**.



B Create a password for future login attempts, or use **admin** for both username and password for some routers.

C Go to **Quick Setup** or **Quick Start** page and follow the step-by-step instructions to complete the initial configuration.

😊 Now you can enjoy your internet.

Already Have a Modem?

If you already have a modem or your internet comes directly from an Ethernet wall outlet, you can switch to Wireless Router mode. Follow the steps below and set up.

1 Connect your computer to the router (LAN 1/2/3 port) via a wired or wireless connection.

Note: The SSIDs (network names) and wireless password are printed on the product label.

2 Configuring the modem router via a web browser

A Launch a web browser and type in

<http://tplinkmodem.net> or **192.168.1.1**.

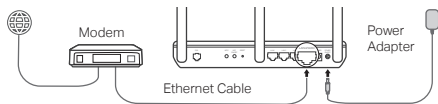
Note: If the login page does not appear, please refer to [FAQ > Q1](#).



B Create a password for future login attempts, or use **admin** for both username and password for some routers.

C Go to **Advanced > Operation Mode** page and switch to **Wireless Router Mode**. Wait until the restart finished.

3 Connect the modem to the router's LAN4/WAN port via an Ethernet cable.



4 Go to **Basic > Internet** to finish the setup.



Now you can enjoy your internet.

For more advanced settings, refer to the User Guide on TP-Link's official website at www.tp-link.com.

Tether App

The TP-Link Tether app provides a simple, intuitive way to access and manage your router. You can block unwelcome devices, set up Parental Controls, configure your wireless settings and more.



Scan the QR code to download the TP-Link Tether app from the Apple App Store or Google Play.

Note: Tether is not supported by some routers. Please check the app description before downloading.

FAQ (Frequently Asked Questions)

Q1. What can I do if the login page does not appear?

- A1. If the computer is set to a static or fixed IP address, change the settings to obtain an IP address automatically from the modem router.
- A2. Verify <http://tplinkmodem.net> is correctly entered in the web browser and press **Enter**.
- A3. Use another web browser and try again.
- A4. Reboot your modem router and try again.
- A5. Disable and enable the active network adapter.

Q2. What can I do if the LED status is not correct?

- A1. Check your cables and make sure they are all plugged in correctly, including the telephone lines and power adapter.
- A2. Restore your modem router to its factory default settings.
- A3. Remove the DSL splitter, directly connect the modem router to the phone jack and then reconfigure the modem router by following the instructions in this Quick Installation Guide.
- A4. Contact your ISP to verify if the DSL line is in good status.
- A5. If you have tried all the suggestions above and the problem still exists, contact our Technical Support.

Q3. What can I do if I cannot access the internet?

- A1. Make sure the telephone and Ethernet cables are plugged in correctly.
- A2. Try to log in to the web management page of the modem router using the default address at <http://tplinkmodem.net>. If you can, try the following answers. If you cannot, change your computer to obtain an IP address automatically from the modem router.
- A3. Consult your ISP and make sure all the VPI/VCI (or VLAN ID), Connection Type, account username and password are correct. If they are not, replace them with the correct settings and try again.
- A4. Restore the modem router to its factory default settings and reconfigure the modem router by following the instructions in this Quick Installation Guide.
- A5. If you have tried all the suggestions above and the problem still exists, contact our Technical Support.

Q4. What can I do if I forget my password?

• Web management page password:

- A. Refer to **FAQ > Q5** to reset the router, and then create a password for future login attempts, or use **admin** for both username and password for some routers.

• Wireless network password:

- A1. The default Wireless Password/PIN is printed on the product label of the modem router.
- A2. If the default wireless password has been changed, log in to the web management page of the router to retrieve or reset your wireless password.

Q5. How do I restore the modem router to its factory default settings?

- A1. With the modem router powered on, press and hold down the **RESET** button of the modem router until there is an obvious change of LEDs, and then release the button.
- A2. Log in to the web management page of the modem router and go to the system management page to restore the modem router.

English

Safety Information

- Keep the device away from water, fire, humidity or hot environments.
- Do not attempt to disassemble, repair, or modify the device.
- Do not use damaged charger or USB cable to charge the device.
- Do not use any other chargers than those recommended.
- Do not use the device where wireless devices are not allowed.
- Adapter shall be installed near the equipment and shall be easily accessible.

Please read and follow the above safety information when operating the device. We cannot guarantee that no accidents or damage will occur due to improper use of the device. Please use this product with care and operate at your own risk.

TP-Link Three Years Limited Product Warranty

For TP-Link Branded Products Only.

THIS WARRANTY GIVES YOU SPECIFIC LEGAL RIGHTS, AND YOU MAY HAVE OTHER RIGHTS THAT VARY FROM STATE TO STATE (OR BY COUNTRY OR PROVINCE).

TO THE EXTENT ALLOWED BY LOCAL LAW, THIS WARRANTY AND THE REMEDIES SET FORTH ARE EXCLUSIVE AND IN LIEU OF ALL OTHER WARRANTIES, REMEDIES AND CONDITIONS.

TP-Link warrants the TP-Link branded hardware product contained in the original packaging against defects in materials and workmanship when used normally in according with TP-Link's guidelines for a period of THREE YEARS from the date of original retail purchase by the end-user purchaser.